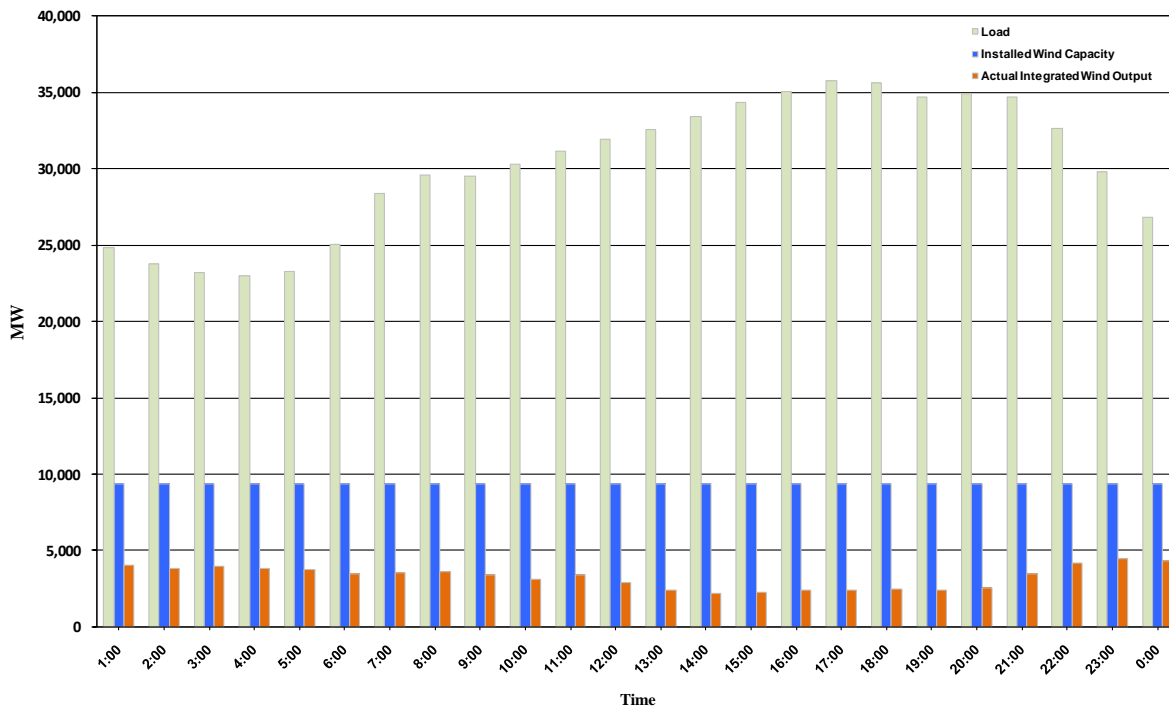




ERCOT Grid Operations Wind Integration Report: 10/05/10

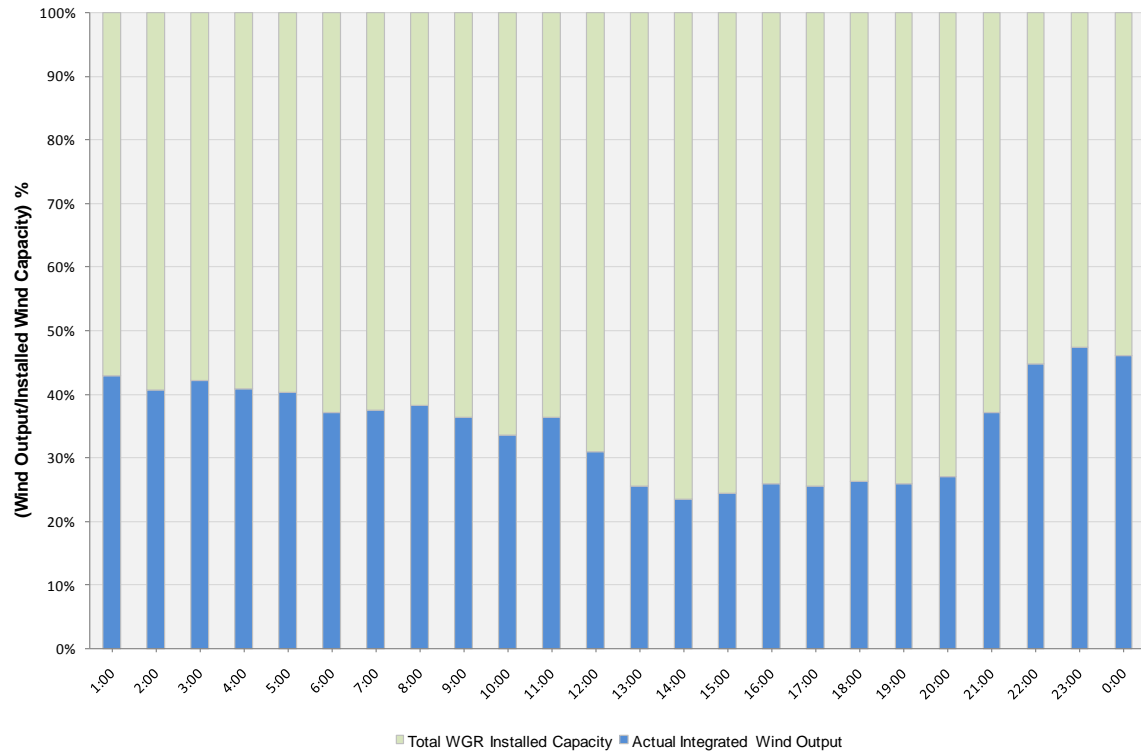
Peak Load	35,774 MW
Load Peak Hour	17
Wind Record 06/12/10	7016 MW
Max Wind value	4720 MW
Wind Peak Hour	22:52:32
Wind Integration %	16.55

Hourly Average Actual Load vs. Actual Wind Output
10-05-2010

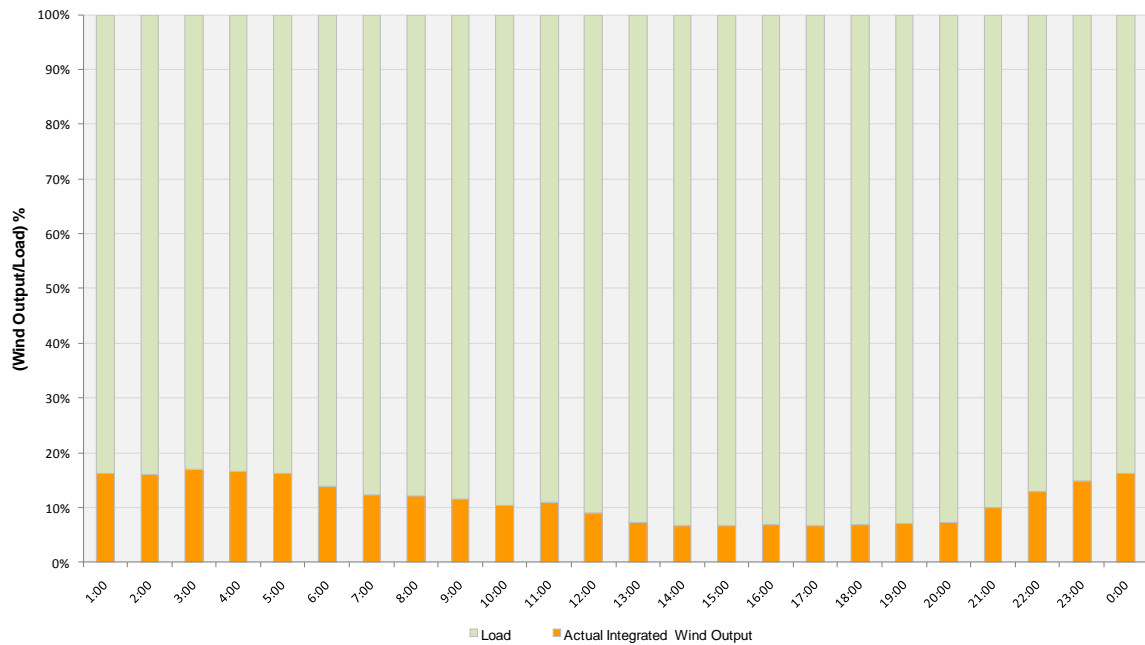




Actual Wind Output as a Percentage of the Total Installed Wind Capacity
10-05-2010



Actual Wind Output as a Percentage of the ERCOT Load
10-05-2010





ERCOT Load vs. Actual Wind Output 09/28/10 - 10/05/10

